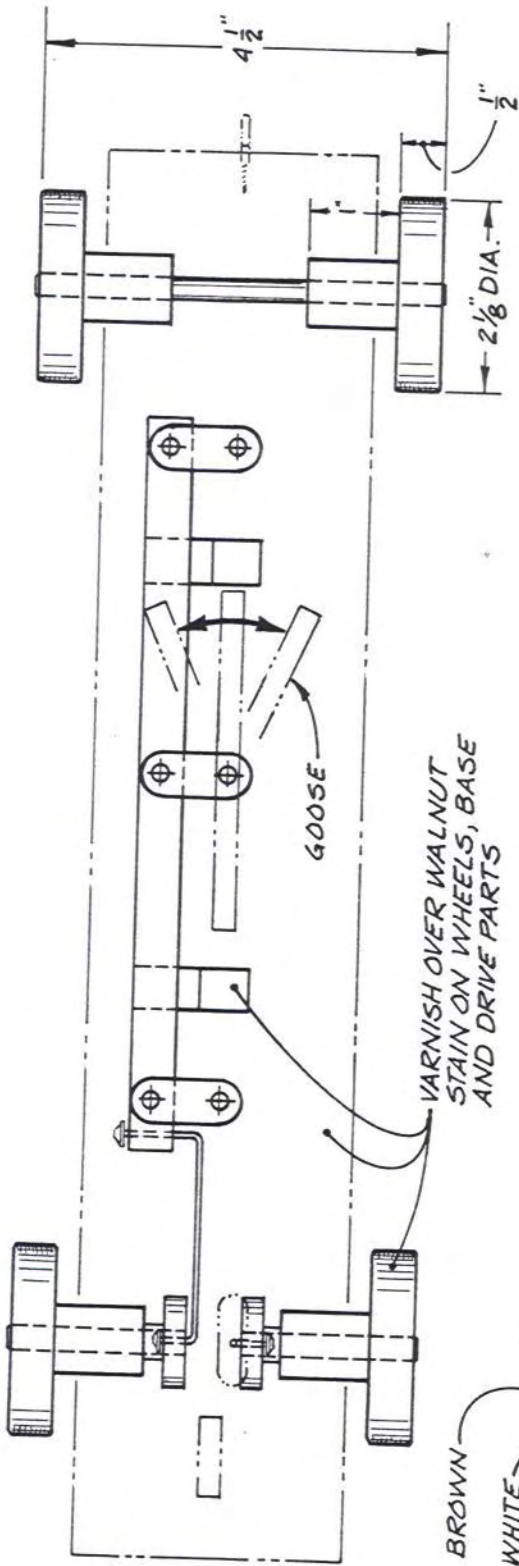
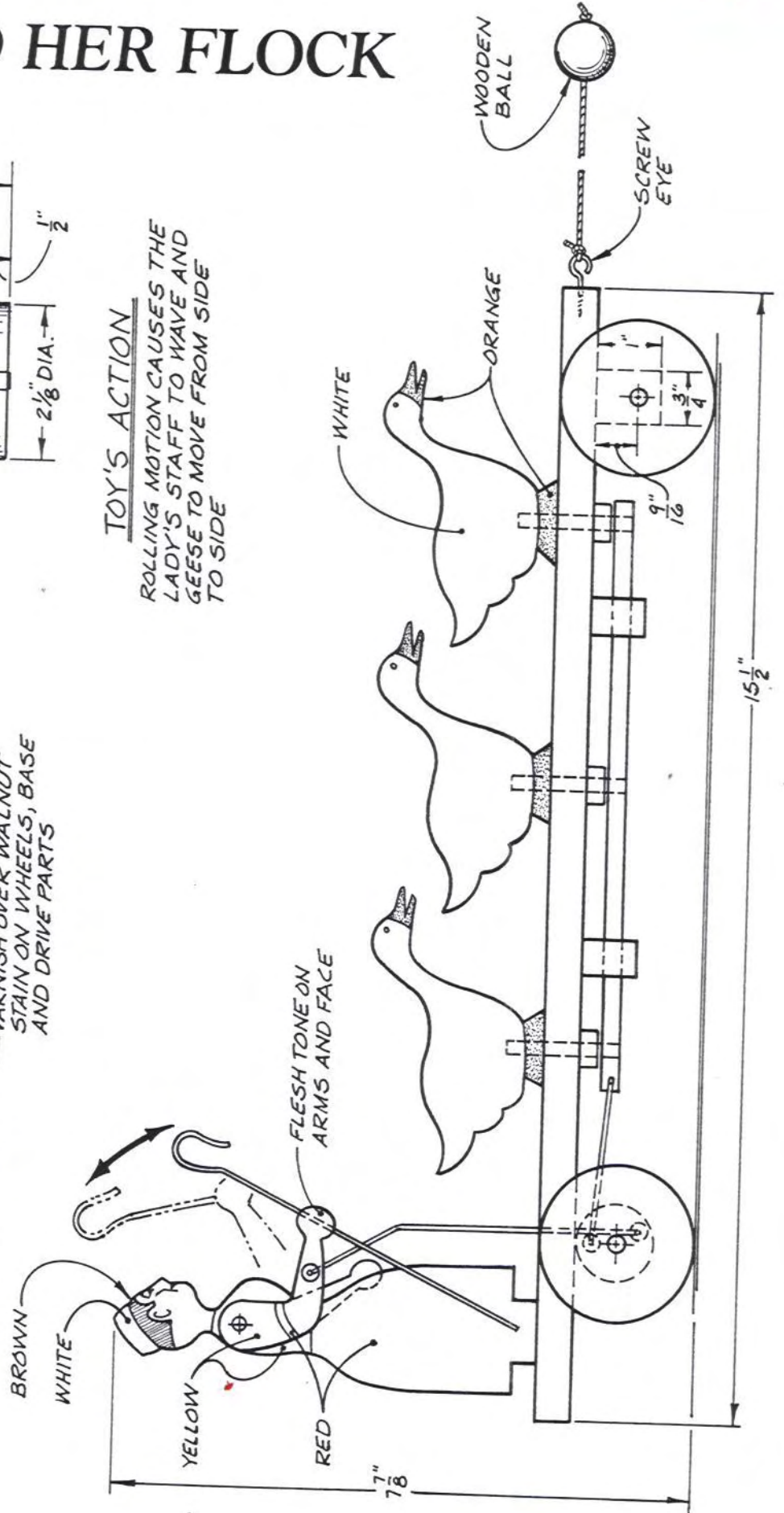


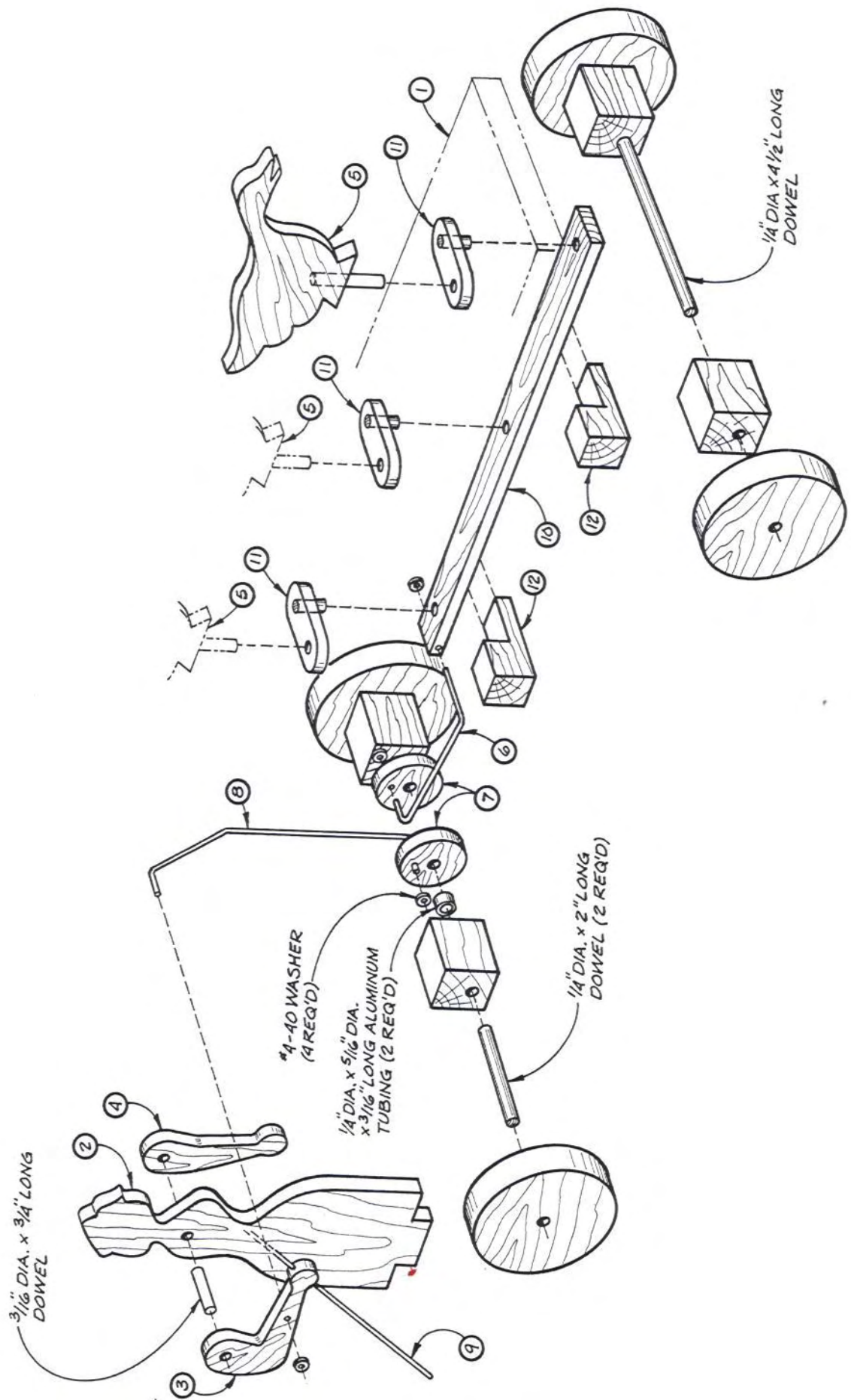
# LADY AND HER FLOCK



## TOY'S ACTION

ROLLING MOTION CAUSES THE LADY'S STAFF TO WAVE AND GEESE TO MOVE FROM SIDE TO SIDE

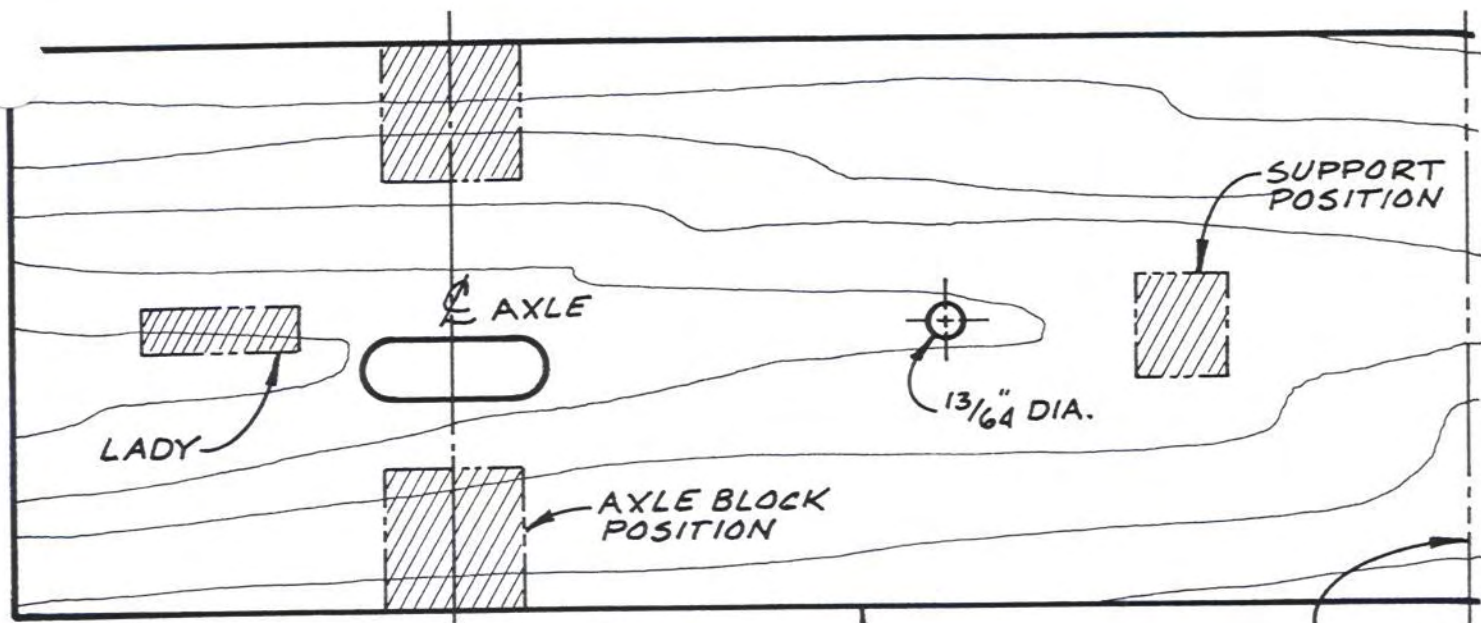






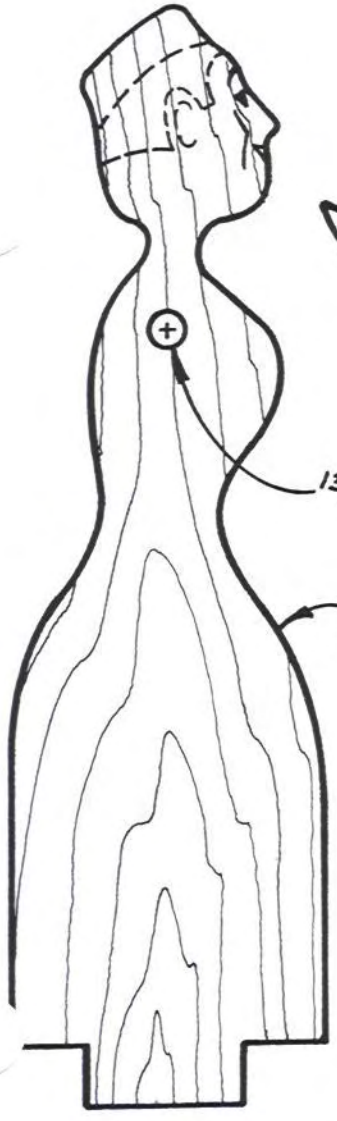
# LADY AND HER FLOCK

## FULL-SIZE PATTERNS

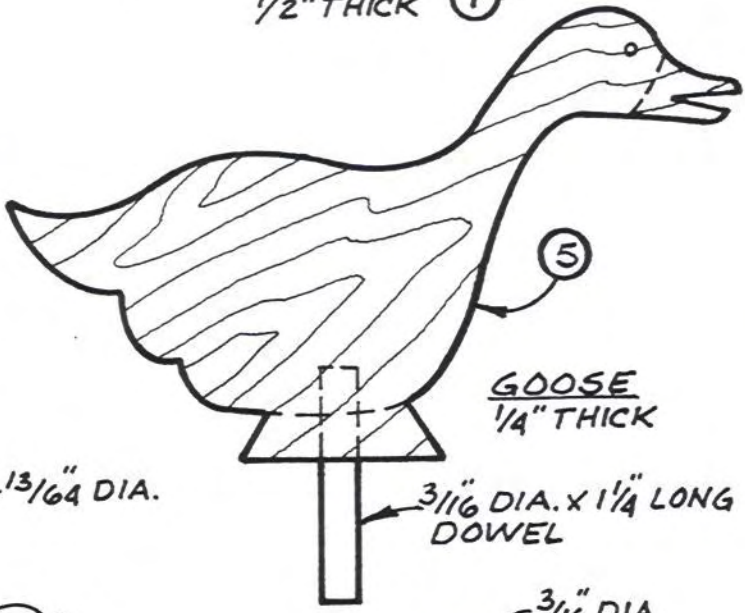


BASE  
1/2" THICK

MATCH LINE



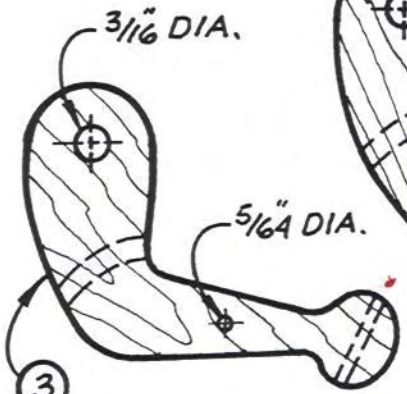
LADY  
1/4" THICK



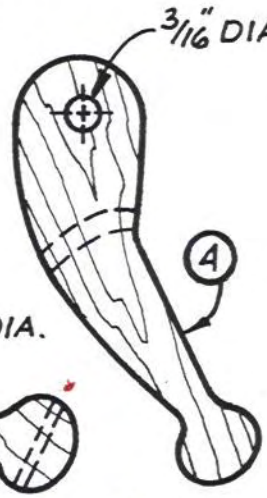
GOOSE  
1/4" THICK

2

5



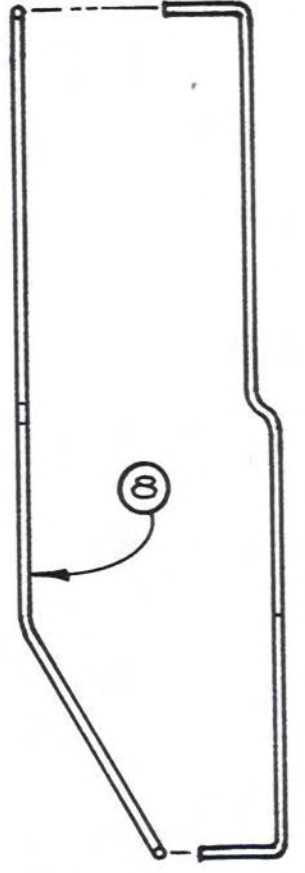
LEFT ARM  
1/4" THICK



RIGHT ARM  
1/4" THICK

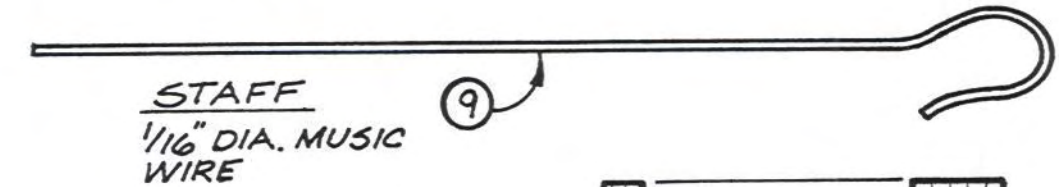
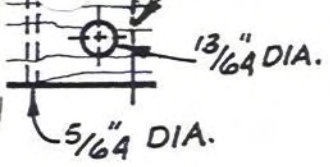
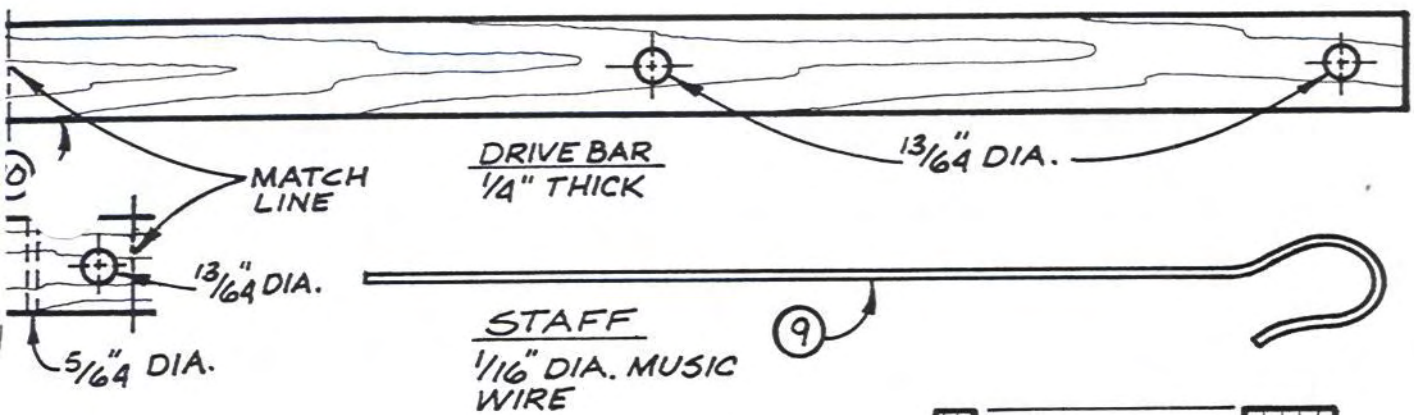
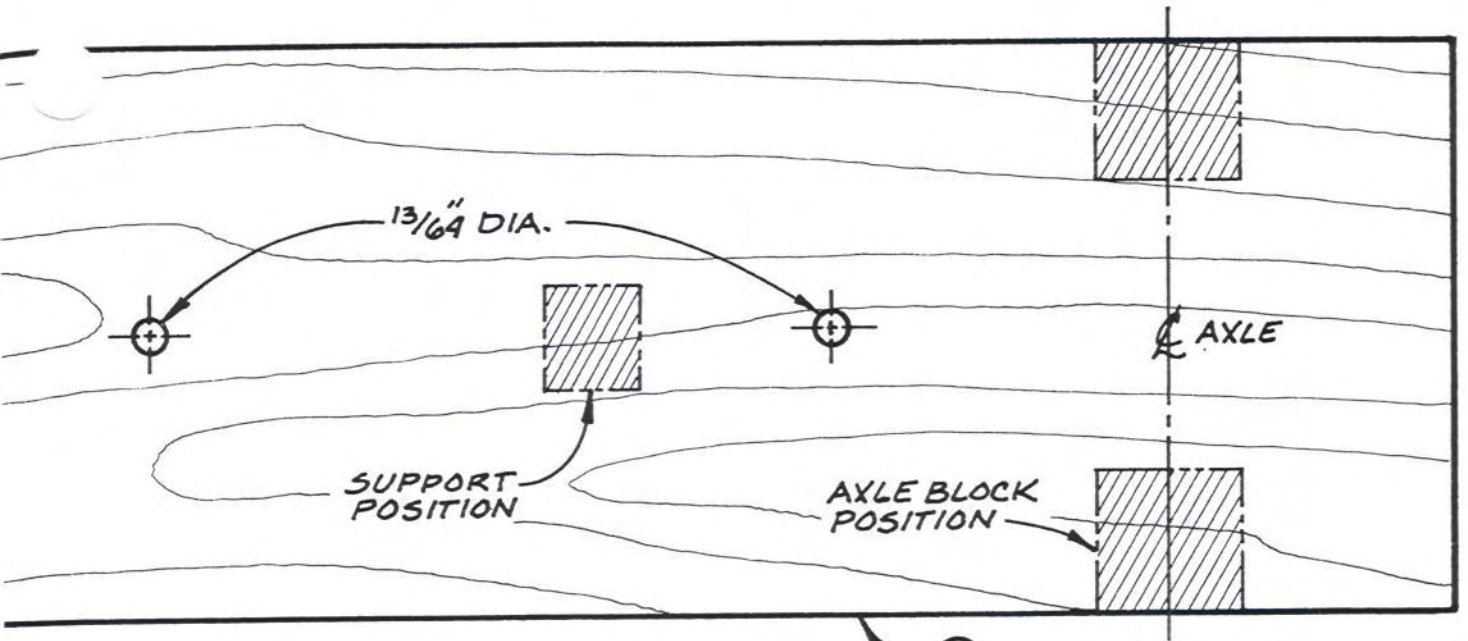
3

4

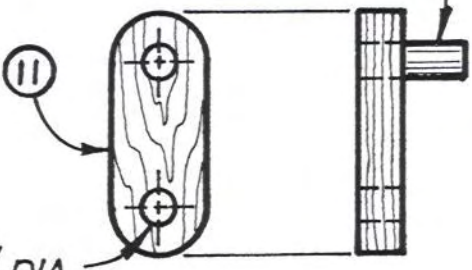


DRIVE ROD-LADY  
1/16" DIA. MUSIC WIRE

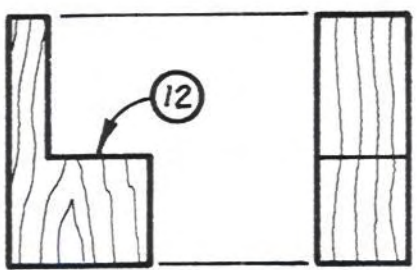
8



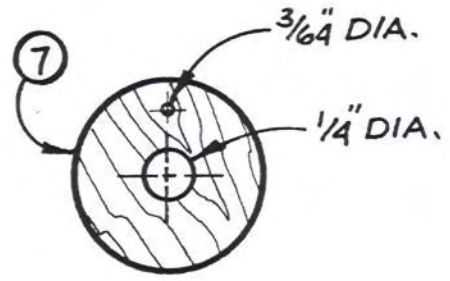
3/16" DIA. x 9/16" LONG  
DOWEL



LINK  
(3 REQ'D)



SUPPORT  
(2 REQ'D)



DRIVE DISK  
1/4" THICK (2 REQ'D)