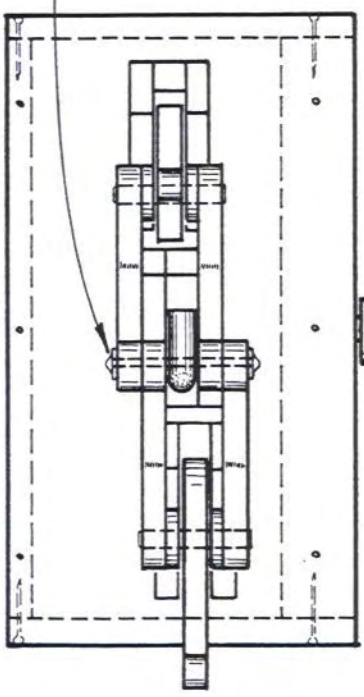


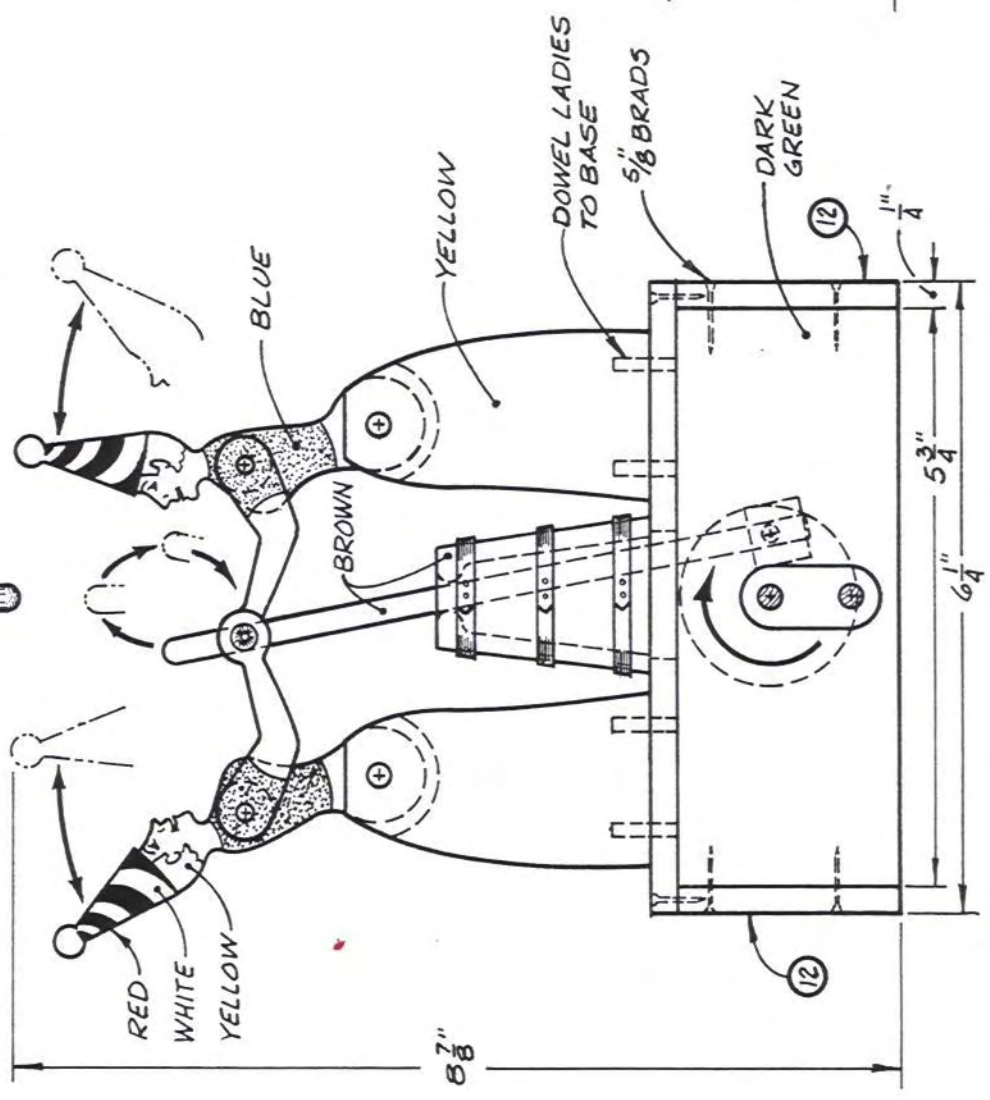
LADIES CHURNING BUTTER

TOY'S ACTION
HAND CRANK ROTATION CAUSES THE CHURN HANDLE TO STROKE UP AND DOWN AND THE LADIES TO MOVE FROM SIDE TO SIDE

OLDER WASHER TO SHAFT



HAND CRANK



#4-40 WASHER (2 REQ'D)

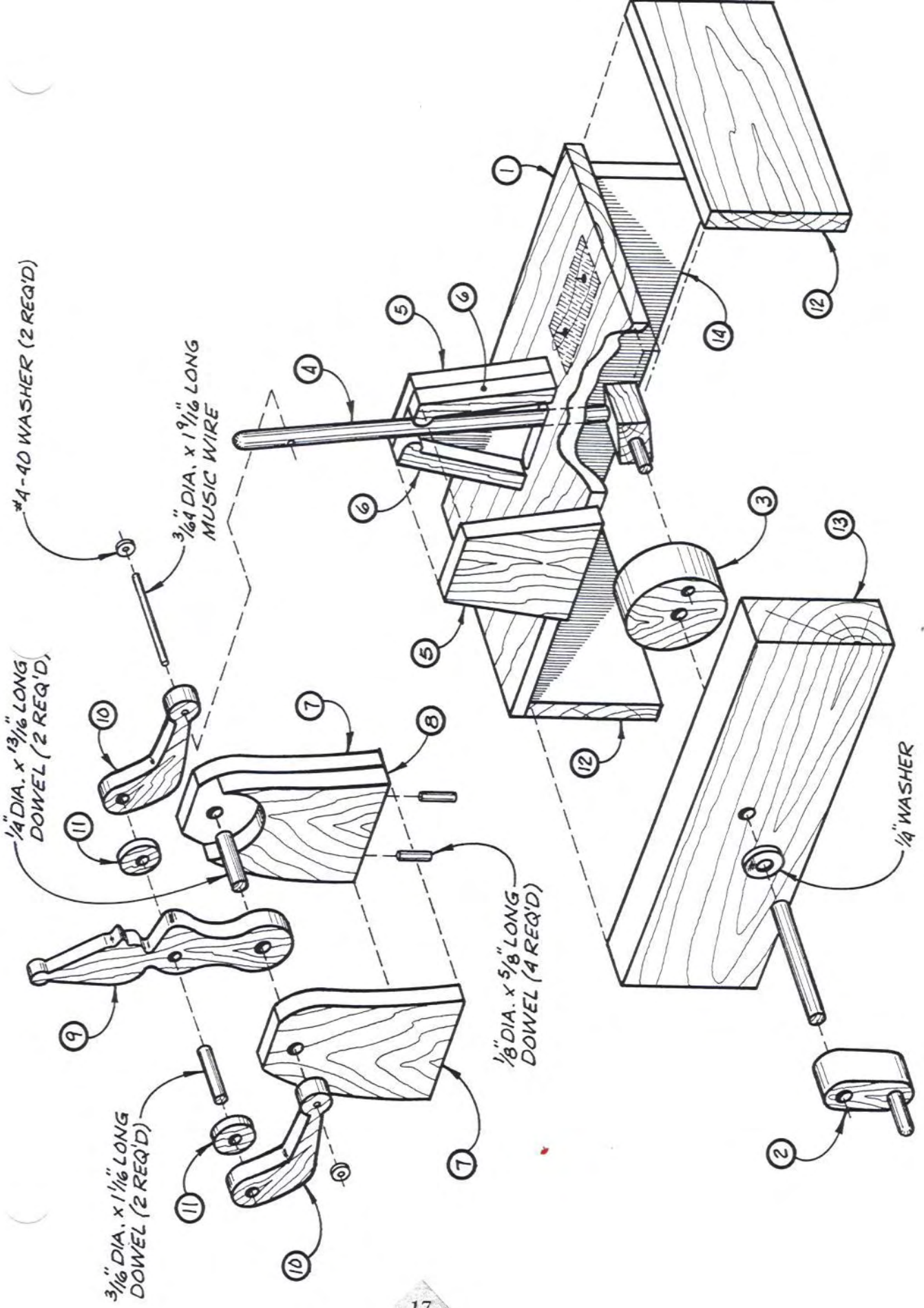
1/4" DIA. x 13/16" LONG DOWEL (2 REQ'D)

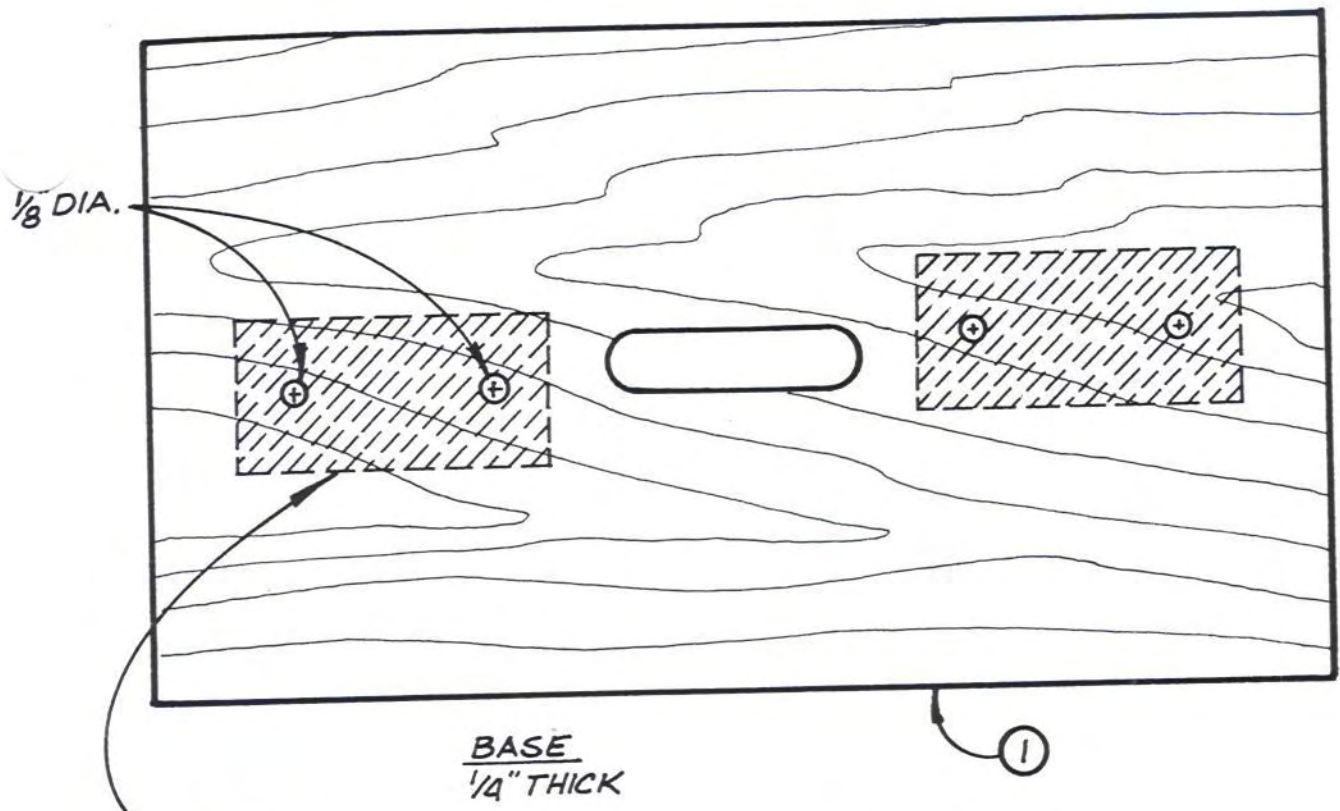
3/16" DIA. x 1 1/16" LONG DOWEL (2 REQ'D)

3/64" DIA. x 1 9/16" LONG MUSIC WIRE

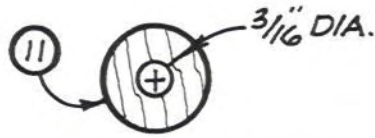
1/8" DIA. x 5/8" LONG DOWEL (4 REQ'D)

1/4" WASHER

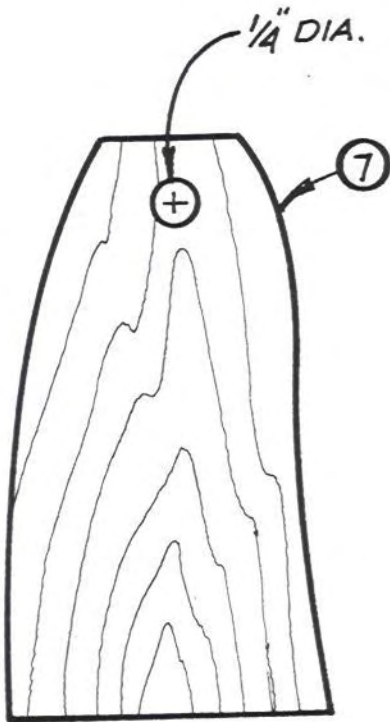




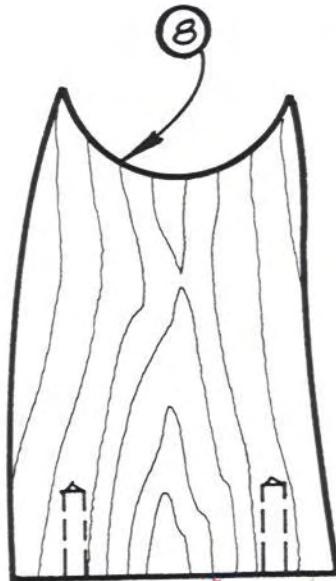
POSITION OF LADY



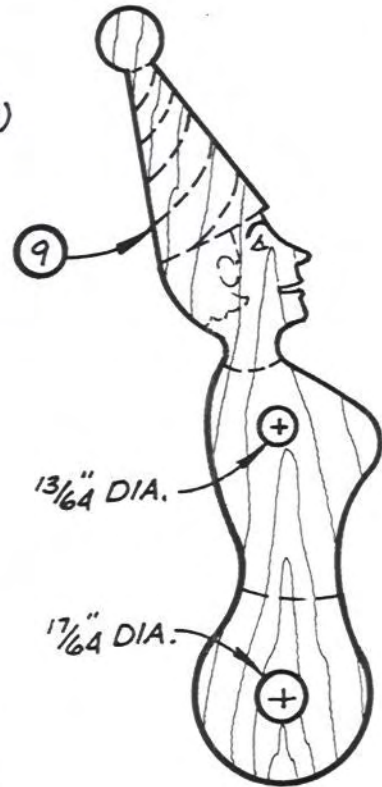
ARM SPACER
 $\frac{1}{8}$ " THICK (4 REQ'D)



SKIRT
 $\frac{1}{4}$ " THICK (4 REQ'D)



SKIRT CENTER
 $\frac{5}{16}$ " THICK (2 REQ'D)



LADY
 $\frac{1}{4}$ " THICK (2 REQ'D)

LADIES CHURNING BUTTER FULL-SIZE PATTERNS

