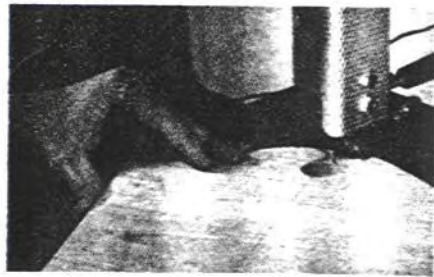


# The Cradle

Every doll needs a place to rest her head — ask any little girl. This Shaker-design cradle makes a cozy place to bed down.

### Plan of Procedure

1. Cut all pieces to the proper size and shape, using the patterns provided. When cutting the Rockers (A), take care that the grain of the wood runs horizontally — from tip to tip — for maximum strength. The bottom edge of the Sideboards (C) should be cut on a 10° angle so they sit flat against the base. To cut the decoration at the top of the Headboard (E), drill a 1/8" hole whose center is 1-1/8" from the top edge. Then open up the hole with your bandsaw or jigsaw.



Opening up a hole with a bandsaw to make the decoration at the top of the Headboard (E).

2. Glue the Sideboards (C) to the Footboard (D) and Headboard (E). Reinforce the glue joints with dowels or screws.

3. If desired, shape or rout a decorative edge on the Base (B). We have used a quarter-round bead, but feel free to use any design that suits your fancy.

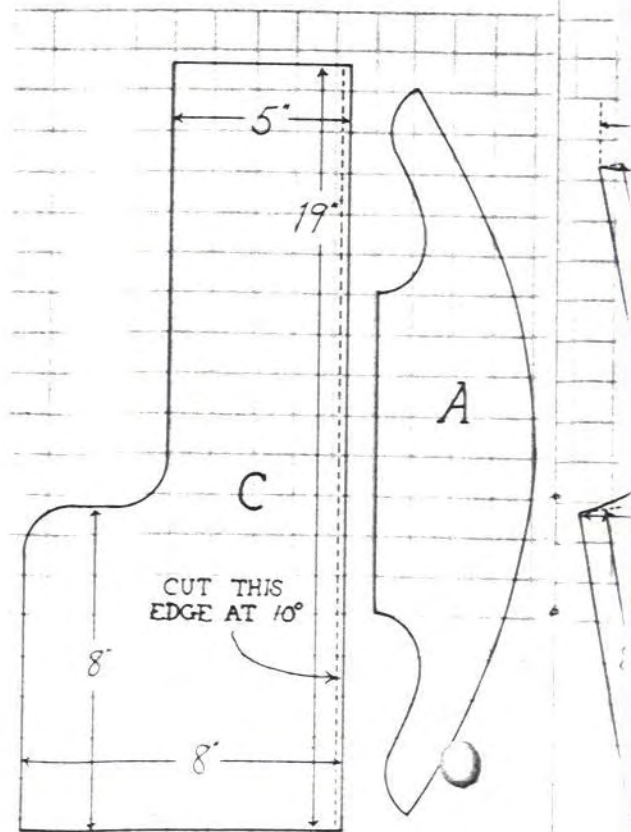
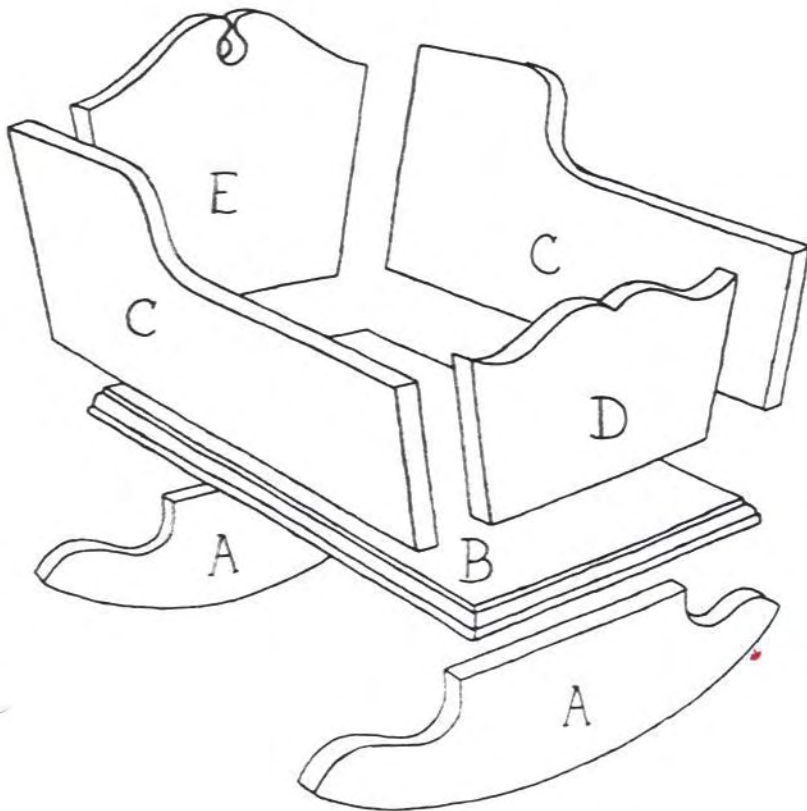
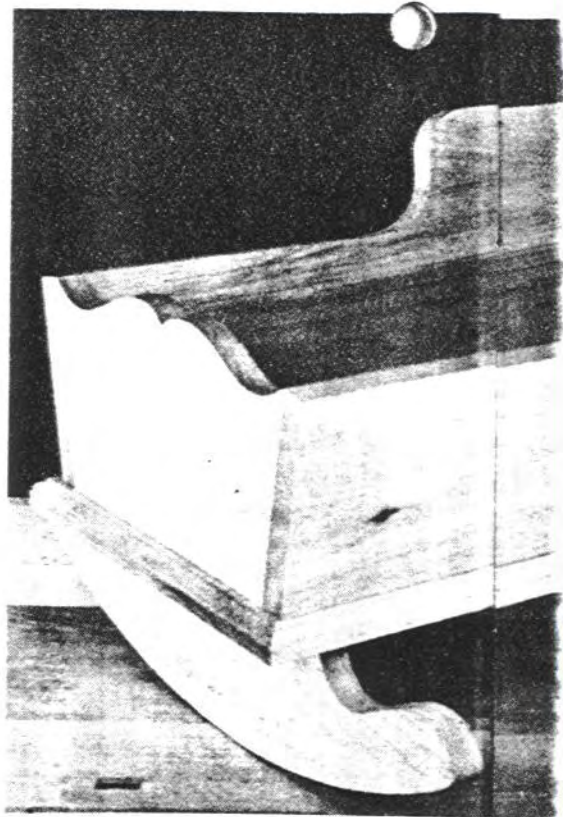
4. Glue the Rockers (A) to the Base (B). The rockers should be positioned 2" from the head and foot of the base. Reinforce the glue joints.

5. Glue the side/foot/headboard assembly to the base/rocker assembly, centering the side, foot, and headboards on the base. Reinforce.

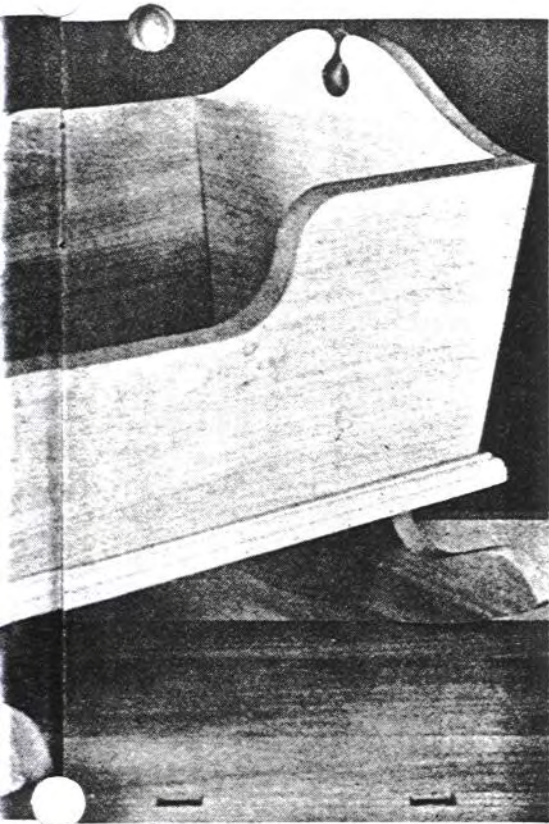
When you are finished, your child will have a comfortable cradle for any doll under 17" tall. If her doll is taller or has somehow grown, add the required number of inches to the length of the base and sideboards as you cut them out.

### THE CRADLE Bill of Materials (in inches)

A. Rockers (2)	18 x 4 x 3/4
B. Base	20 x 11 x 3/4
C. Sideboards (2)	19 x 8 x 3/4
D. Footboard	10-1/4 x 5-3/8 x 3/4
E. Headboard	11-1/4 x 10-1/4 x 3/4







## Save \$11.75 with this popular Lathe Accessory Package



Woodturning really isn't difficult when you have the proper accessories. Spindle turning only uses two basic cuts, a bead and a cove. With the workpiece rotating between the two centers, you can use these cuts to turn out legs, posts and candlesticks. Bowls, goblets, lazy susans, etc. can be turned by first mounting the workpiece to a faceplate attached to the spindle of the lathe. Thus you can shape both the cir-

cumference of the piece and the "face" since it is not obstructed in any way.

Chisels are available in a variety of shapes, each designed for a particular job. The Gouge roughs-out the stock or makes it round. The Skew smooths, forms tapers, beads and V's. The Roundnose hollows, coves and rounds. And the Parting Tool grooves, cuts shoulders, and separates or "parts" the finished piece from the scrap base.

**Lathe Chisel Set:** The five most commonly used lathe chisels are precision manufactured from the finest alloy steel to take and hold keen cutting edges. Seasoned hardwood handles are shaped for superior balance and control. Set includes: 1" Skew, 1" Gouge, 1/8" Parting Tool, 1/2" Roundnose and 3/8" Gouge. Overall length is 17".  
#505586.....

\$44.95

**Lathe Screw Center:** Specially designed for turning small diameter workpieces from 1" to 4" long without using the tailstock center. Replaceable wood screw securely holds workpiece to center.  
#505601.....

\$10.95

**Tailstock Live Center:** This ball bearing center offers a virtually friction-free tip that rotates with the workpiece to eliminate burning. Fits any #2 Morse Taper tailstock.  
#505602.....

\$17.95

**Tailstock Chuck Arbor:** A precision tool enabling holes to be easily drilled and accurately positioned in the ends of the workpieces mounted on the driven spindle. Simply slip the Jacobs Chuck (standard with MARK V) over the end of the arbor and tighten the setscrew. Features a #2 Morse Taper that slips easily into the tailstock cup of the MARK V.  
#505603.....

\$7.95

**Lathe Faceplates:** For turning bowls, lamp bases and other workpieces not turned between centers. Precision machined from pressure-cast aluminum.

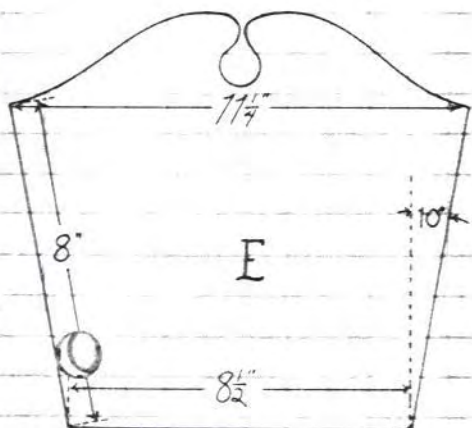
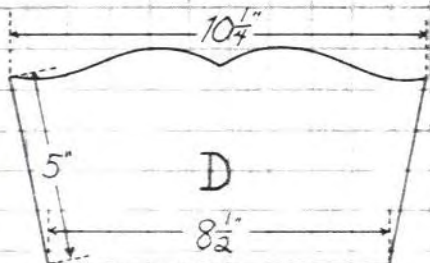
#505590 (3-3/4")..... \$ 8.95

#505591 (6")..... \$10.95

TOTAL VALUE..... \$101.70

Order the Lathe Package..... *You save \$11.75*

#505754 - ALL SIX ONLY..... \$89.95



This advertisement appeared in the Wall Street Journal and Dayton, Ohio newspapers on September 13 - 14, 1979.

This advertisement is neither an offer to sell, nor a solicitation of an offer to buy any of these shares. The offer is made only by the Prospectus.



335,000 Shares

# Shopsmith Inc.

Common Shares

(Without Par Value)

Of the Common Shares offered, 200,000 are being issued and sold by the Company and 135,000 outstanding shares are being sold by certain Selling Shareholders.

Price \$8.00 Per Share

Copies of the Prospectus are obtainable in any State from only such of the undersigned as may lawfully offer these securities in such State.

Prescott, Bail & Turben

McDonald & Company

Gradison & Company  
Incorporated

Wm. C. Roney & Co.

Vercoe & Company, Inc.