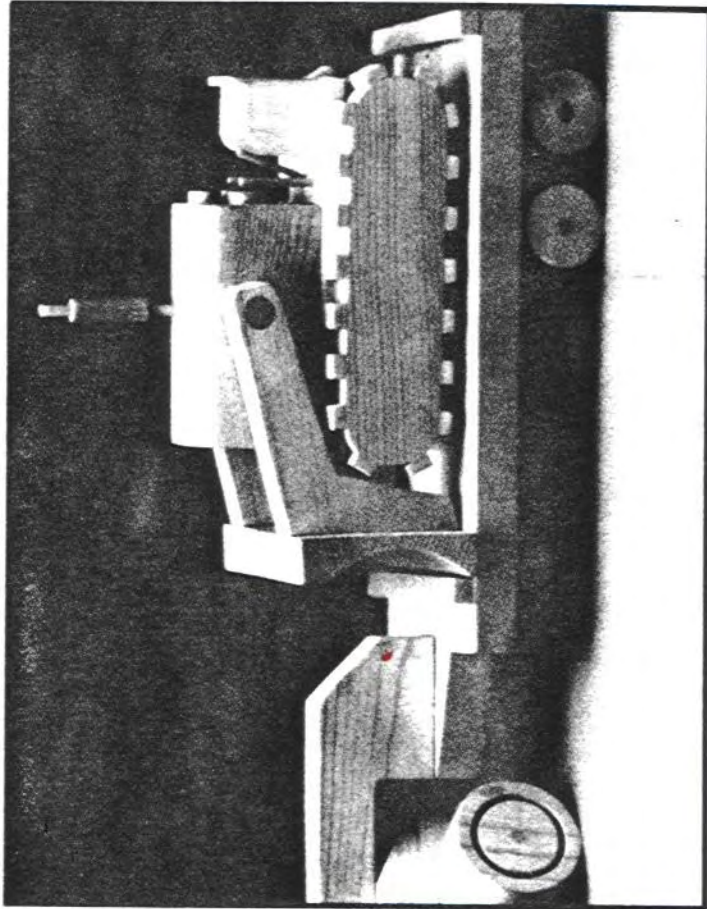


LOW-BOY TRAILER

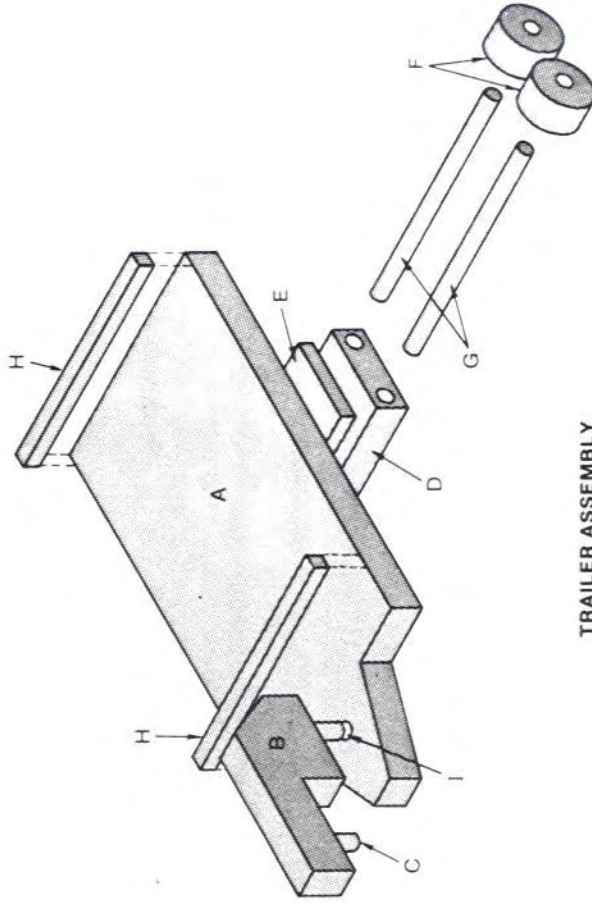


The primary purpose of the low-boy trailer is to haul steamrollers, bulldozers, cranes, and road graders from one building site to another. These trailers are an integral part of any construction company—including yours.

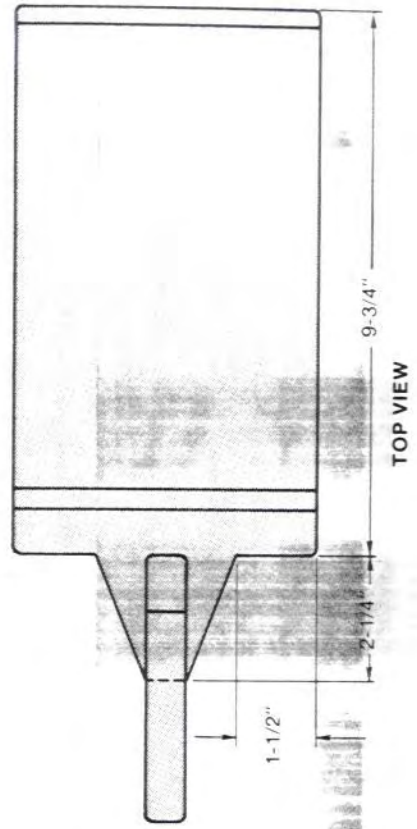
The trailer is easy to build and is suitable for the bulldozer and crane. You'll need a longer trailer for the steamroller or road grader; just build a longer bed. When making one of these trailers, take time to build some extras.

TOP VIEW

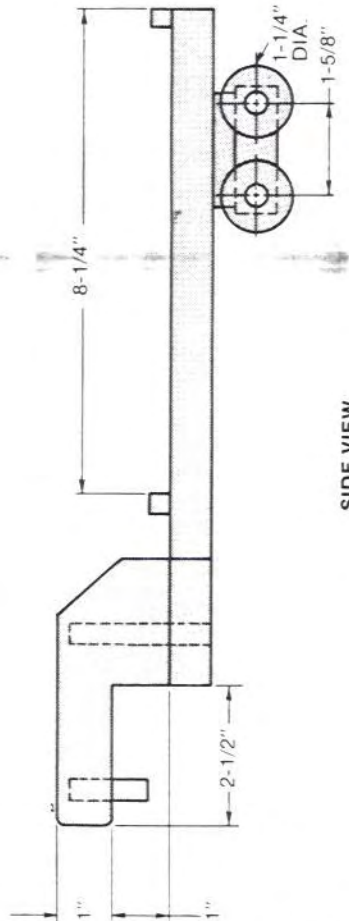
32



TRAILER ASSEMBLY



TOP VIEW



SIDE VIEW

PROCEDURE

1. PREPARATION

Cut all the parts listed under materials. For a longer trailer, change the length of part A—all other parts remain the same. As with all the projects in this book, be sure to make extra parts.

2. FLOOR

Lay out the front contour of the trailer floor (A) on the stock. Using a handsaw or scroll saw, cut the floor to shape. If you want a longer floor, cut a longer piece of stock, but keep the front profile the same. Glue and clamp the floor stops (H) into place; then set the assembly aside.

3. COUPLING ARM

Lay out the profile of the coupling arm (B) on a piece of

stock. For additional strength in the arm, place the coupling arm on the stock so the grain runs diagonally across it. Cut out the arm and drill a 3/8"-diameter hole in the end of it for a coupling pin (C). Glue the pin into place; then glue and clamp the coupling arm to the trailer floor.

After the glue has thoroughly dried, drill a 2-1/2" deep hole through the bottom of the floor up through the coupling arm. Glue a reinforcing pin (I) into the hole and sand flush.

4. AXLE HOLDER

After you've prepared the stock for the axle holder (D), clamp it securely to a drill press table and drill the 5/16"-diameter axle holes in it. Next, glue and clamp the holder (D) to the spacer (E). After the glue

has dried, glue and clamp the assembly to the floor.

5. WHEELS

Make the wheels (F) by first forming the 1/8"-deep wheel rims with a 3/4"-diameter hole saw. Next, use a 1-3/8" diameter hole saw to cut out the 1-1/4"-diameter wheels. After the wheels have been cut out, sand them smooth. Finally, cut the axles (G) to length and assemble them with glue to the wheels and the axle holder.

The low-boy trailer is ready to go to work for your construction crew and provide much-needed assistance in transporting all that equipment to the next site.

MATERIALS

Part	Description	Pieces	Dimensions (finished dimensions in inches)
A	Floor	1	3/4 × 5-3/4 × 12
B	Coupling arm	1	3/4 × 2 × 4-3/4
C	Coupling pin	1	3/8 dia. × 1-5/8
D	Axle holder	1	3/4 × 2-1/4 × 4
E	Axle spacer	1	3/8 × 1-1/2 × 3-1/2
F	Wheels	4	1-1/4 dia. × 3/4
G	Axles	2	1/4 dia. × 5-5/8
H	Floor stops	2	3/8 × 3/8 × 5-3/4
I	Reinforcement pin	1	3/8 dia. × 2-1/2

CONSTRUCTION NOTES

- The floor (A) can be made any length to accommodate various sizes of equipment.
- Lay out the coupling arm (B) diagonally across the grain for strength.