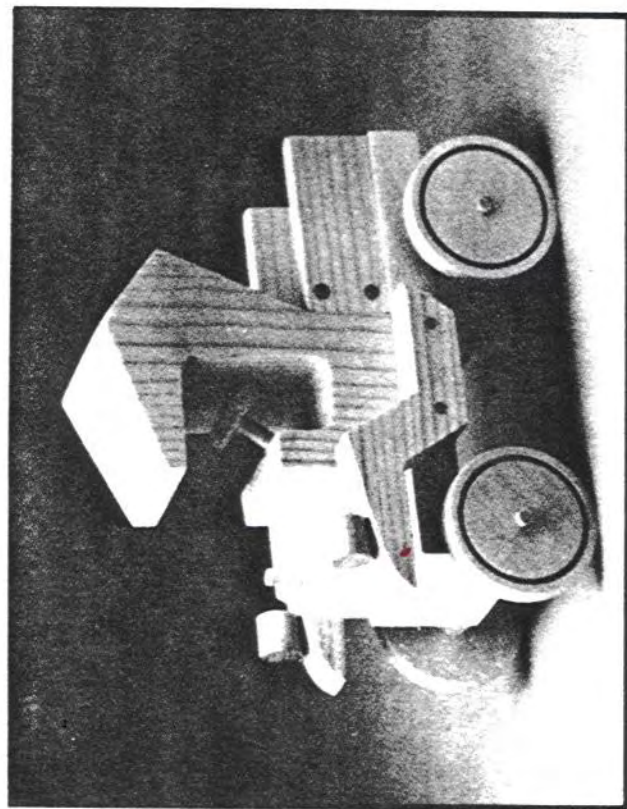
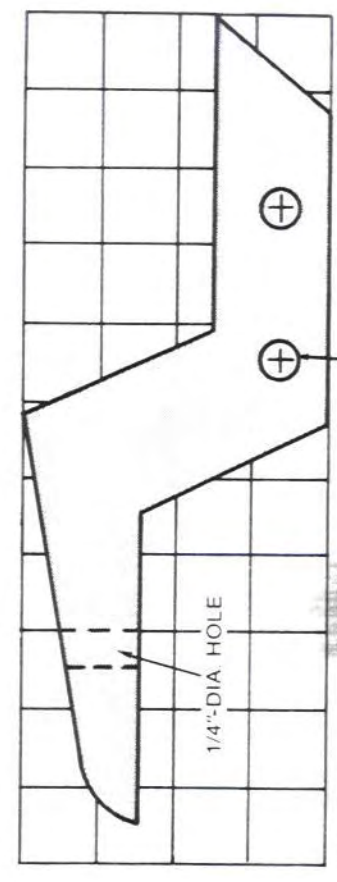
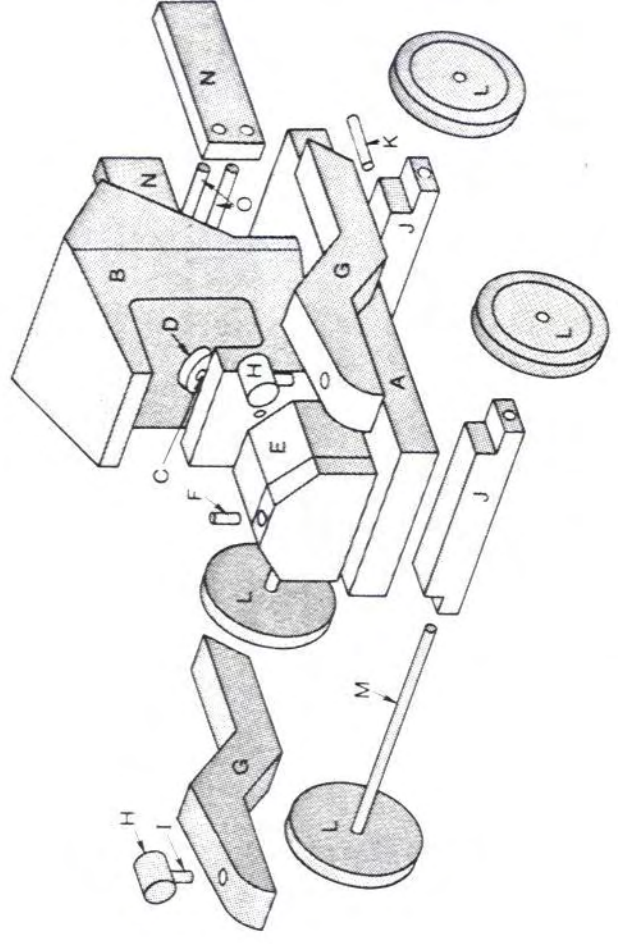


MODEL T TRUCK



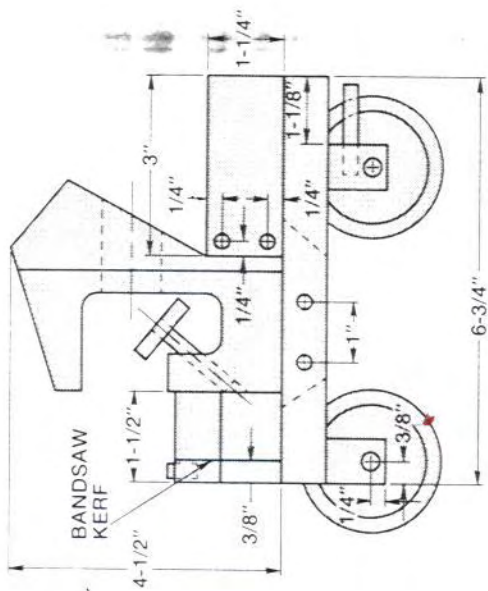
After Henry Ford began building the affordable American car, he started working on variations of the idea. One of the most popular versions of the Model T was the pickup truck—a vehicle the farmer could use to replace the horse-drawn wagon.

This version of the pickup truck uses many of the features and measurements of the sedan. And, if you look at the tank truck, you'll see a lot of things in common with this pickup. If you haven't already made the sedan or tank truck, check out these plans and make extra parts for them while you're making the pickup.

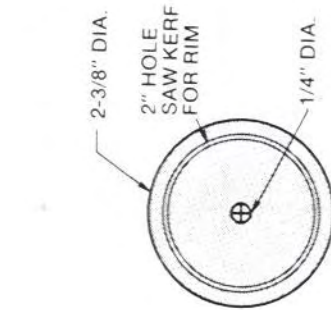


DRILL 1/4"-DIA. DOWEL HOLES.AFTER FENDER IS GLUED TO THE BODY.

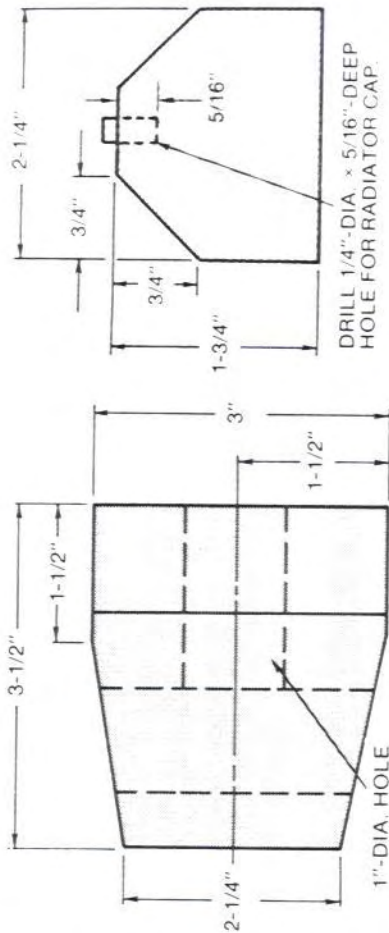
FENDER DETAIL



SIDE VIEW



WHEEL DETAIL

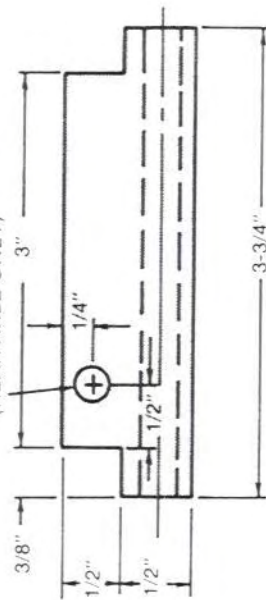


TOP VIEW
BODY DETAIL

ENGINE DETAIL

DRILL 1/4"-DIA. x 5/16"-DEEP HOLE FOR RADIATOR CAP.

1/4"-DIA. EXHAUST PIPE HOLE (REAR AXLE ONLY)



AXLE DETAIL

PROCEDURE

I. BASE ASSEMBLY

Cut the stock for the base (A) to length and width. If you're making several of these trucks,

rip long boards to 3" wide; then cut them to 6-3/4" lengths. The base stock is the same width for all three models, but lengths on each model vary.

Next, cut stock to length and width to form the

3/4" x 1" x 3-3/4" axle holders (J). Clamp the axle holder stock securely to a drill press table and drill the 5/16" diameter axle holes where indicated in the plans. After the holes have been drilled, lay out

and cut the notches on the ends of the holders.

CAUTION: Because of the small size of this stock, use only a coping saw, scroll saw, or bandsaw to cut the notches. **DO NOT** attempt this cut on a table saw.

After the notches are cut, drill the 1/4"-diameter exhaust pipe hole and glue the exhaust pipe (K) in place. Glue and clamp the axle holders to the base; then set the base assembly aside.

2. BODY

Make the complicated shape of the body (B) using a compound cutting method.

Glue up four pieces of 1 x 4 stock to form a 3"-thick block, and orient the block so the glue lines run vertically. Cut the stock to length to yield a 3"-wide x 3-1/2"-long x 4-1/2"-tall block; then transfer the top and side patterns from the plans to the block.

Next, drill a 1"-diameter hole through the block from the back for the back window (this only needs to be drilled 2" deep). Turn the block on its side and drill three 3/8"-holes in the corners of the cutout as indicated in the plans by the little crosses on the drawing detail. Cut out all the side contours with a bandsaw or scroll saw.

To get the 2-1/4" width on the front, tilt the bandsaw or scroll saw table 10° and, keeping the front of the body on the table, bevel the sides.

The 1/4"-diameter steering wheel hole is drilled by turning

dowels in place. Glue and clamp the bed assembly to the base.

5. FENDERS

Make a cardboard template for the fenders (G) from the plans. Transfer the pattern to the stock; then use a bandsaw or scroll saw to cut them out. If you're planning on making the tank truck, make extra fenders for that at this time. Next, drill the 1/4"-diameter holes in the front of the fenders for the headlamp columns (I).

Make the headlamps (H) by taking a 12" length of 5/8"-diameter dowel rod and drilling a 1/4" hole near the end of it for the headlamp column. Once you've drilled the hole, cut the headlamp to length. Repeat this process for the other headlamp. Glue the headlamp columns to the headlamps; then glue these assemblies to the fenders.

Attach the fenders to the main assembly with glue and clamps. After the glue dries, drill two 1/4"-diameter reinforcement holes through the fenders and into each side of the truck. Glue the reinforcement dowels into place and sand flush.

6. WHEELS

Prepare 3/8"-thick stock for the wheels (L); then use a 1-7/8"-diameter hole saw to create the "rims." Next, cut out the wheels using a 2-1/2"-diameter hole saw; then sand.

Cut the axles (M) to length; then glue the wheels and axles to the truck.

MATERIALS

Part	Description	Pieces	Dimensions (finished dimensions in inches)
A	Base	1	3/4 x 3 x 6-3/4
B	Body	1	3 x 3-1/2 x 4-1/2
C	Steering column	1	1/4 dia. x 1-3/4
D	Steering wheel	1	1-1/8 dia. x 1/4
E	Engine	1	2-1/4 x 1-3/4 x 1-1/2
F	Radiator cap	1	1/4 dia. x 1/2
G	Fenders	2	3/4 x 2 x 5-1/4
H	Headlamps	2	5/8 dia. x 5/8
I	Headlamp columns	2	1/4 dia. x 1
J	Axle holders	2	3/4 x 1 x 3-3/4
K	Exhaust pipe	1	1/4 dia. x 1-1/2
L	Wheels	5	2-3/8 dia. x 3/8
M	Axles	2	1/4 dia. x 4-1/2
N	Sides	2	1/4 x 1-1/4 x 3
O	Bed front	2	1/4 dia. x 3
P	Reinforcement pins (not shown)	4	1/4 dia. x 1-1/2